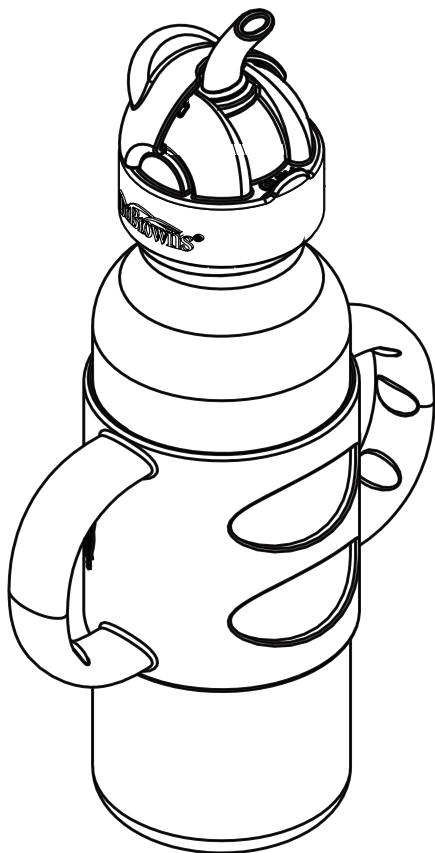


# Dr Brown's milestones™



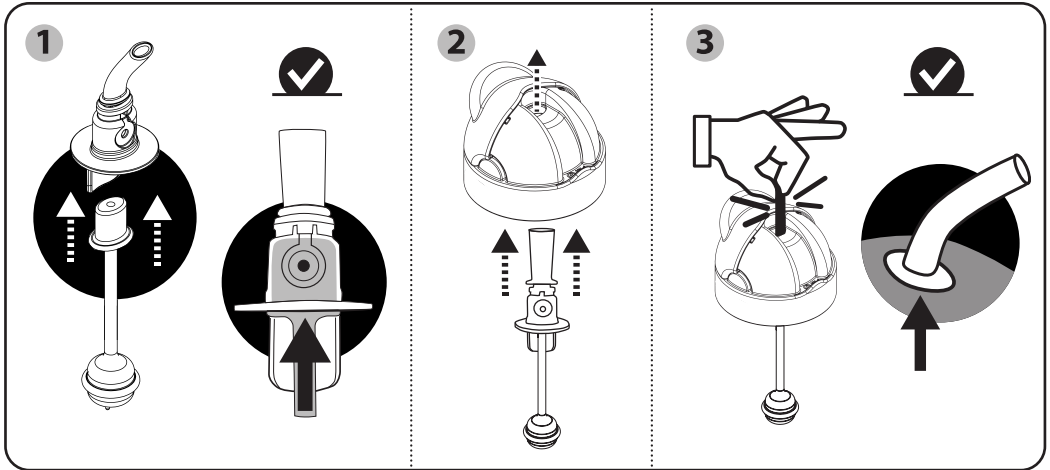
**Sippy Straw and  
Sippy Straw Bottles**

## **Read and save these instructions for future use.**

Dr. Brown's Milestones™ soft silicone sippy straw and sippy straw bottle are designed to help your child transition from bottle to cup. The sippy straw and flip-top cap can also be used in place of the nipple/teat on the Dr. Brown's® Options+™ Bottles when the internal vent system has been removed.

**Sippy Straws will only work with the Flip-Top Cap. They will not work properly with the vent system installed, or in non Dr. Brown's® Bottles.**

If your sippy straw bottle has Dr. Brown's™ Silicone Handles, place bottle on a firm surface, place handles over neck of bottle and push down into place on bottle. **When removing handles from bottle, soapy water may help handles slide off more easily.**



### **BEFORE FIRST USE**

Use clean hands and clean surfaces when handling. Disassemble and clean the product and then place the components in boiling water for 5 minutes. This is to ensure hygiene. Wash all parts prior to use. Ensure the straw hole is clean.

### **BEFORE EACH USE**

Pull on the straw in all directions before each use to make sure it does not tear. Inspect carefully, especially when the child develops teeth, and replace the straw immediately if it shows any signs of wear or damage, such as cracking or change of shape. Small pieces can accidentally be inhaled and cause serious injury. Clean before each use. The straw must be clean and free of obstructions.

### **CLEANING**

Avoid overly aggressive cleaning of any parts to prevent damage to sealing surfaces. The soft silicone sippy straw can be thoroughly cleaned using the included wire brush, making it easy to access all openings. Be sure to remove wire cleaning brush from bottle before cleaning and do not sterilize or microwave the wire cleaning brush. All parts are dishwasher safe (top rack only), and safe for use in electric sterilizer, microwave sterilizer or boiling water.

## **For your child's safety and health**

### **WARNING!**

- Continuous and prolonged sucking of fluids will cause tooth decay.
- Always check food temperature before feeding.
- Throw away at the first signs of damage or weakness.
- Keep components not in use out of the reach of children.
- Never attach to cords, ribbons, laces or loose parts of clothing. The child may be strangled.
- Never use straw as a pacifier/soother.
- Always use this product with adult supervision.
- Always use the bottle with straw installed. The bottle will not function properly without it.
- Always check the straw for signs of wear and replace when damaged.
- Inspect the straw before each use and pull the straw in all directions. Throw away at the first signs of damage or weakness.
- Hot or carbonated liquids are not recommended.
- Do not use a microwave oven to heat the bottle because microwave ovens can create hotspots in the bottle, contents and/or components.
- The components of this bottle are not toys and should not be given to children to play with or suck on.
- Do not leave the product in direct sunlight or heat or leave in disinfectant (sterilizing solution) for longer than recommended, as this may weaken the straw.
- Do not allow a child to walk or run while using any bottle.
- Straws are not suitable for a child under six months.